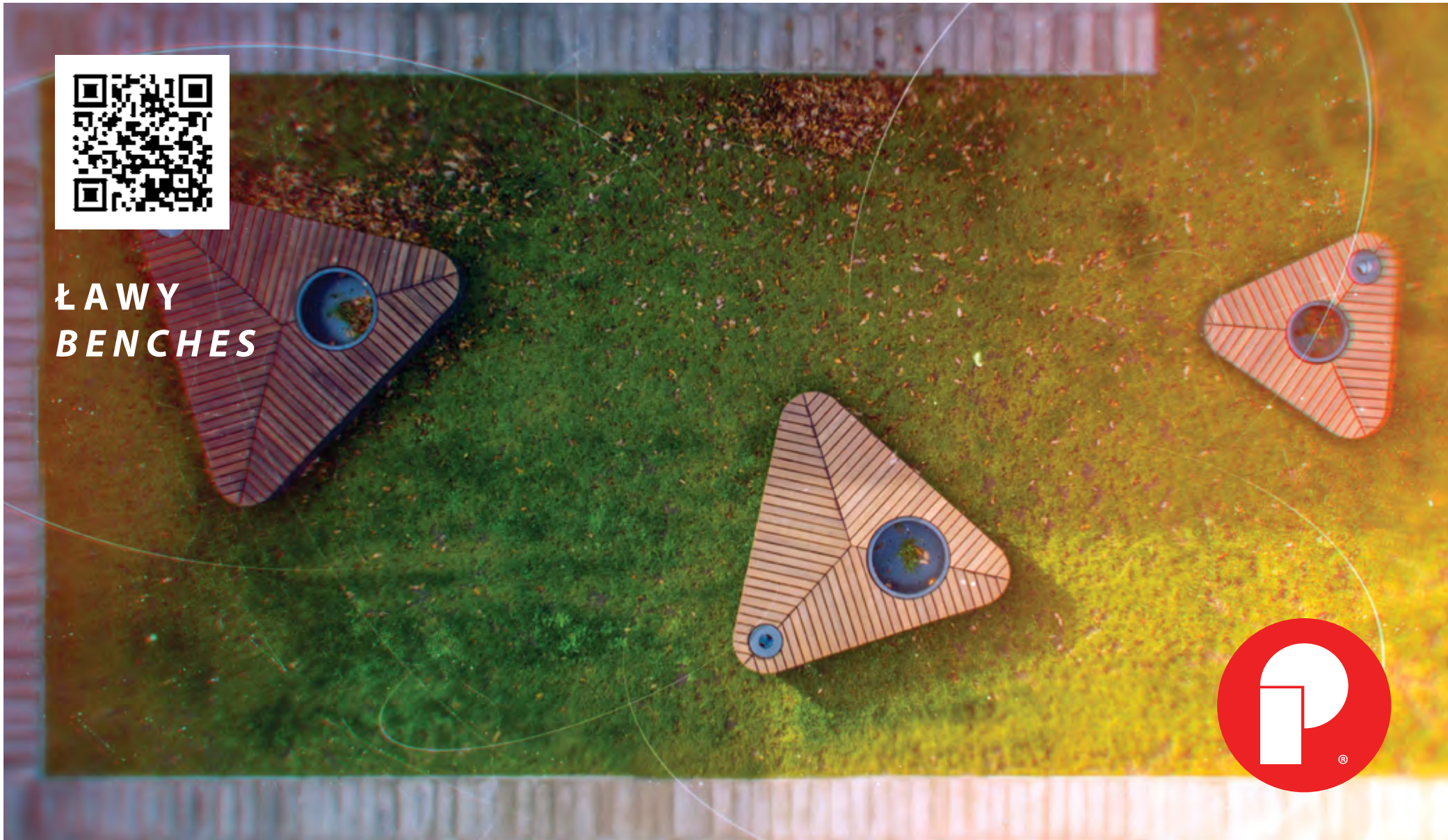




**ŁAWY  
BENCHES**



**PUCZYŃSKI**  
MAŁA ARCHITEKTURA  
STREET FURNITURE



**PUCZYŃSKI**  
**MAŁA ARCHITEKTURA**  
**STREET FURNITURE**

# O NAS

FIRMA "PUCZYŃSKI - MAŁA ARCHITEKTURA" ISTNIEJE OD 1978r. I JEST LIDEREM NA RYNKU PRODUKCJI MAŁEJ ARCHITEKTURY W POLSCE. PODSTAWOWA NASZA DZIAŁALNOŚĆ, TO PROJEKTOWANIE I PRODUKCJA ELEMENTÓW MAŁEJ ARCHITEKTURY. WYKORZYSTUJĄC DUŻE DOŚWIADCZENIE W ZAKRESIE JAKOŚCI, DBAJĄC JEDNOCZEŚNIE O FUNKCJONALNOŚĆ I WYGODĘ, STWORZYLIŚMY BOGATY PROGRAM PRODUKCYJNY, KTÓRY PRZEDSTAWIAMY PAŃSTWU NA NASZEJ STRONIE INTERNETOWEJ. ZAPRASZAMY DO ZAPOZNANIA SIĘ Z DŁUGĄ LISTĄ REFERENCYJNĄ, ZAOPATRZONĄ W DOKUMENTACJĘ FOTOGRAFICZNĄ. KILKA TYSIĘCY REALIZACJI, W WIĘKSZOŚCI DLA RENOMOWANYCH I WYMAGAJĄCYCH KLIENTÓW, TO GWARANCJA JAKOŚCI OFEROWANYCH WYROBÓW.

NIE BEZ ZNACZENIA JEST TEŻ PRZYJAZNY I SZYBKI SERWIS GWARANCYJNY I POGWARANCYJNY.

ZE WZGLĘDU NA RÓŻNORODNOŚĆ KOMBINACJI I MNOGOŚĆ OFEROWANYCH WYROBÓW (1300 MODELI), PRODUKUJEMY WYŁĄCZNIE NA ZAMÓWIENIE. DAJE TO NAM IDEALNE MOŻLIWOŚCI POŁĄCZENIA PAŃSTWA OCZEKIWAŃ Z NASZYM MOŻLIWOŚCIAMI. INDYWIDUALNY, ORYGINALNY STYL POWSTAJĄCYCH W NASZEJ FIRMIE PRODUKTÓW, W POŁĄCZENIU Z PRODUKCJĄ OD PODSTAW, DAJĄ NIEOGRANICZONE MOŻLIWOŚCI KREACJI NOWYCH KOLEKCJI CZY MODERNIZACJI JUŻ ISTNIEJĄCYCH.

PONADTO JESTEŚMY OTWARC I CHĘTNI DO WSPÓŁPRACY TWÓRCZEJ Z PROJEKTANTAMI, W CELU TWORZENIA INDYWIDUALNYCH DZIEŁ LUB ZESPOŁÓW MAŁEJ ARCHITEKTURY DLA DANEGO PROJEKTU.





*PUCZYNSKI STREET FURNITURE WAS ESTABLISHED IN 1978. WE SPECIALISE IN THE DESIGN AND MANUFACTURE OF DIFFERENT TYPES OF STREET FURNITURE. OUR EXTENSIVE PRODUCT RANGE, AS PRESENTED ON THIS WEBSITE AND IN OUR CATALOGUE IS BASED ON THE SUCCESSFUL COMBINATION OF QUALITY, FUNCTIONAL DESIGN, DURABILITY AND COMFORT. WE INVITE YOU TO HAVE A CLOSER LOOK AT OUR DIVERSE REFERENCE LIST SUPPORTED BY PHOTOGRAPHIC DOCUMENTATION OF THOUSANDS OF COMPLETED PROJECTS, MAINLY FOR THE WELL-KNOWN, DEMANDING CLIENTS. OUR CLIENT PORTFOLIO IS THE BEST GUARANTEE OF THE QUALITY OF OUR PRODUCT.*

*DUE TO THE VARIETY AND SHEER NUMBER (1300) OF COMBINATIONS OF OUR PRODUCTS, WE MANUFACTURE EXCLUSIVELY TO ORDER. THIS ALLOWS US TO MEET YOUR REQUIREMENTS WITH TAILOR-MADE SOLUTIONS. ANTI-CORROSION, VANDALISM PROOFING AND OTHER TECHNICAL INNOVATIONS MEAN THAT OUR STREET FURNITURE IS ROBUST ENOUGH FOR THE MOST EXPOSED AND HEAVILY USED SITES, WITHOUT PREJUDICING ECOLOGICAL OR SAFETY STANDARDS. INDIVIDUAL DESIGN CREATED IN-HOUSE, COMBINED WITH PRODUCTION FROM SCRATCH, CONSTITUTES THE BASIS FOR THE UNLIMITED DEVELOPMENT OF NEW IDEAS AND MODERNISATION OF EXISTING DESIGNS.*

*WE ALSO WELCOME OUR CLIENTS DESIGNS AND IDEAS AND ARE READY TO COOPERATE, CREATING BESPOKE STREET FURNITURE TO THEIR SPECIFIC INSTRUCTIONS OF EXISTING DESIGNS.*

**ABOUT US**

# KONTAKT



## PUCZYŃSKI

MAŁA ARCHITEKTURA  
STREET FURNITURE

POLSKA

PUCZYŃSKI - MAŁA ARCHITEKTURA

05-800 PRUSZKÓW  
ROBOTNICZA 31

INFO@PUCZYNSKI.PL  
WWW.PUCZYNSKI.PL

T: +48 22 758 66 93

EXCLUSIVE  
FRANCE  
REPRESENTATION

AAG  
135 AVENUE THIERS  
BORDEAUX

ALEXANDRA GELIER  
AG@AAG-COLLAB.FR  
WWW.AAG-COLLAB.FR

T: +33 (0)676486634

EXCLUSIVE  
FRANCE  
REPRESENTATION

CARACOL  
RUE DU 14 JUILLET  
LE PRÉ ST GERVAIS

ALAINPLUMAS@JEUX-CARACOL.COM

T: +3306 82 94 41 25

EXCLUSIVE  
BELGIUM / LUXEMBOURG / NETHERLANDS  
REPRESENTATION

METAALWAREN CLAERBOUT  
BRUGGESTEENWEG 258  
BE-8830 HOOGLEDE

STRAATMEUBILAIR@CLAERBOUT.BE  
WWW.CLAERBOUT.PRO

T: +32 (0)51 729 105

**EXCLUSIVE  
GREECE  
REPRESENTATION**

**DIAMANTIS GROUP  
7 KANARI STREET  
GLYKA NERA  
15354 GREECE  
VASILIKI DIAMANTI**

**INFO@DIAMANTISGROUP.GR  
WWW.DIAMANTISGROUP.GR**

**T: +30 2441025678**

**EXCLUSIVE  
GERMANY  
REPRESENTATION**

**EIBE PRODUKTION +  
VERTRIEB GMBH & CO. KG  
INDUSTRIESTR. 1  
D-97285 RÖTTINGEN**

**RICHARD CIEMINSKI  
RICHARD.CIEMINSKI@EIBE.DE  
WWW.EIBE.DE**

**T: +49 9338 89 924  
T: +49 170 458 55 23**

**EXCLUSIVE  
ITALY  
REPRESENTATION**

**EXCLUSIVE  
ITALY  
REPRESENTATION**

**GREEN FORNITURE SRL  
VIA LISPIDA 18  
35043 MONSELICE (PD)  
INFO@GREENFORNITURE.IT  
WWW.GREENFORNITURE.IT**

**T: +39 3713548810**

**EXCLUSIVE  
SWITZERLAND / LIECHTENSTEIN  
REPRESENTATION**

**GTSM\_MAGGLINGEN AG  
GROSSÄCKERSTRASSE 27  
8105 REGENSDORF ZH**

**INFO@GTSM.CH  
WWW.GTSM.CH**

**T: +41 44 461 11 30**

EXCLUSIVE  
FINLAND  
REPRESENTATION

HAPLE AB OY  
SÖDERHOLMSVÄGEN  
LEPPLAX

ANDREAS AHLKOG  
ANDREAS.AHLKOG@HAPLE.FI  
WWW.HAPLE.FI

T: +358 50 428 8134

EXCLUSIVE  
UNITED STATES  
REPRESENTATION

M A L I K GALLERY COLLECTION  
23587 FOLEY STREET  
HAYWARD, CA 94545 USA

JOHN WATSON, CEO  
JOHN@MALIKGALLERY.COM  
WWW.MALIKOUTDOOR.COM

T: +1 (510) 784-8929  
T: +1 (510) 784-8930  
SKYPE: JOHN\_WATSON\_AT\_MALIK

EXCLUSIVE  
QATAR / SAUDI ARABIA / UNITED ARAB EMIRATES  
REPRESENTATION

MIDDLE EAST AGRICULTURE COMPANY MEAC  
P.O. BOX 49921, RIYADH 11513 SAUDI ARABIA

KHALED NAWAR  
KNAWAR@MEAC.COM.SA  
WWW.MEAC.COM.SA

T: +971 58 999 6414  
T: +971 4 886 1151

EXCLUSIVE  
ESTONIA  
REPRESENTATION

NAVAOJA OÜ  
JÄRVA VALD  
PEEDU KÜLA  
73413 JÄRVAMAA  
SIIRI PART, SALES CONSULTANT

SIIRI.PART@NAVAOJA.EE  
WWW.NAVAOJA.EE

T: +372 5179819

EXCLUSIVE  
NORWAY  
REPRESENTATION

NORDIC-FURNITURE  
DRAMMENSVEIEN  
SKØYEN

ESPEN ALLERGODT  
ESPEN@NORDIC-FURNITURE.NO

T: +47 468 62 404

EXCLUSIVE  
ROMANIA  
REPRESENTATION

SPORT PLAY SYSTEMS SRL  
STR. HOREA 4  
CLUJ-NAPOCA

CRISTIAN PAVEL  
OFFICE@SPORTPLAY.RO  
WWW.SPORTPLAY.RO

T: +40 743 372396

EXCLUSIVE  
DENMARK / NORWAY / SWEDEN  
REPRESENTATION

TEJBRANT AB  
S-187 13 TÄBY SWEDEN

JANIS.LUKINS@TEAMTEJBRANT.SE  
WWW.TEAMTEJBRANT.COM

T: +46 8 505 230 12

EXCLUSIVE  
LATVIA / LITHUANIA  
REPRESENTATION

UAB "MONARDA BALTIC GROUP"  
ZYGIO STR. 97-R2, LT-08236  
VILNIUS, LITHUANIA

DIRECTOR DAINIUS GALINAITIS  
INFO@MONARDA-GROUP.COM  
MONARDA-GROUP.COM/MAZOJI-ARCHITEKTURA

T: +37067676862

**CONTACT**



2700+ MODELI





*OVER 2700 MODELS*

7000+ REALIZACJI





7000+ PROJECTS

99% ZADOWOLONYCH KLIENTÓW





BASTION WAŁOWA

*99% SATISFIED CUSTOMERS*

40+ LAT DOŚWIADCZENIA





*40+ YEARS OF EXPERIENCE*



# 21 KRAJÓW NA ŚWIECIE





*21 COUNTRIES*

# ŁAWY



DWUSTRONNE  
DOUBLE-SIDED



Z PARKINGIEM ROWEROWYM  
WITH BICYCLE STAND



HAMAKI  
HAMMOCKS



Z DONICĄ  
WITH PLANTER



JEDNOSTRONNE  
FOR SINGLE PERSON



PO ŁUKU / OKRĄGLE  
CURVED



Z SIEDZISKIEM TAPICEROWANYM  
WITH UPHOLSTERED SEAT



PIKNIKOWE  
PICNIC



Z BETONEM  
WITH CONCRETE



MODUŁOWE  
SIDE APERTURE

## BENCHES

						
02-01-01	02-01-04	02-01-05	02-02-02	02-02-03	03-01-04	04-04-01
						
04-01-01_03	04-01-02	04-04-04	04-04-10	04-04-10	04-13-01	06-01-01
						
06-01-02	06-01-04	06-01-05	06-02-01	06-02-02	06-14-01	06-18-01
						
07-01-01	07-02-01	07-02-06	07-02-08	07-02-10	07-02-13	07-02-13_01
						
07-02-14	07-02-15	07-02-17	07-02-18	07-02-19	07-02-20	08-02-02
						
08-02-03	08-02-04	08-02-06	10-15-03	10-15-06	10-15-08	10-45-01



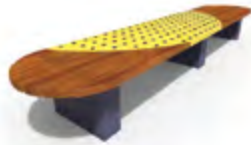
10-49-02



10-58-06



10-68-08



10-73-01



10-83-04



11-02-01



11-02-03



13-02-03



13-02-05



13-02-07



13-02-08



13-02-09



13-02-10



13-02-12



13-02-14



13-02-15



13-02-16



13-02-17



13-02-18



13-02-19



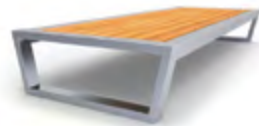
13-02-20



13-02-22



13-02-23



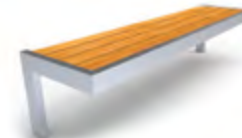
13-02-24



13-02-25



13-02-26



13-02-27



13-02-29



13-02-30



13-02-30\_01



13-02-31



13-02-32



13-02-32\_01



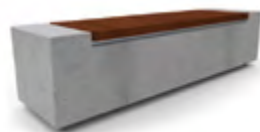
13-02-33



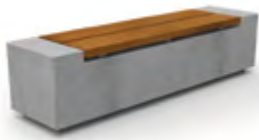
13-02-33\_01



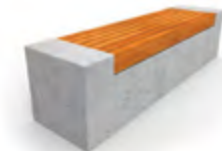
13-02-33\_02



13-02-35



13-02-35\_02



13-02-35\_03



13-02-35\_04



13-02-36



13-02-38



13-02-39\_01 13-02-39\_02 13-02-40 13-02-41 13-02-42 13-02-43 13-02-44



13-02-44\_01 13-02-44\_01 13-02-45 13-02-46 13-02-46\_01 13-02-47 13-02-48\_02



13-02-48\_04 13-02-49 13-02-52 13-02-53 13-02-53\_01 13-02-54 13-02-55



13-02-56 13-02-57 13-02-57\_01 13-02-58 13-02-59 13-02-60 13-02-61



13-02-61\_01 13-02-62 13-02-62\_01 13-02-65 13-02-65\_01 13-02-66 13-02-68



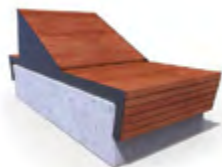
13-02-71 13-02-72 13-02-73 13-02-73\_01 13-02-76 13-02-76\_01 13-02-77



13-02-77\_03



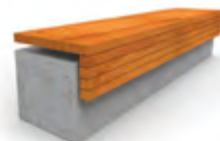
13-02-77\_04



13-02-77\_06



13-02-77\_10



13-02-78



13-02-79



13-02-80



13-02-81



13-02-82



13-02-83



13-02-84



13-02-85



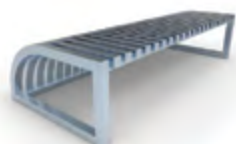
13-02-86



13-02-87



13-02-88



13-02-89



13-02-90



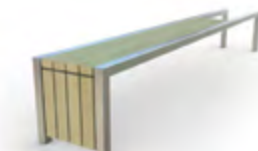
13-02-93



13-02-94



13-02-95



13-02-96



13-04-18\_02



13-04-18\_08



18-02-01



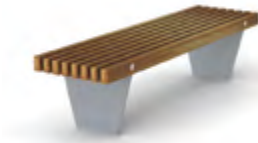
18-02-02



18-02-03



18-02-04



18-02-05



18-02-06



18-02-07



18-02-08



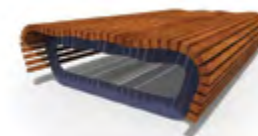
18-02-09



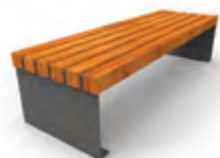
18-02-10



18-02-11



18-02-12



18-02-14



18-02-15



18-02-16



18-02-17



18-02-18



18-02-19



18-02-19\_04



18-02-20



18-02-21



18-02-22



18-02-23



18-02-25



18-02-27



18-02-29



18-02-31\_01



18-02-31\_02



18-02-32



18-02-33



18-02-33\_01



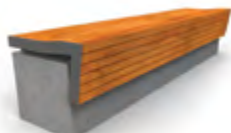
18-02-34



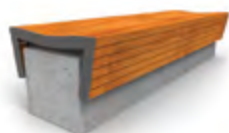
18-02-34\_01



18-02-35



18-02-36



18-02-37



18-02-38



18-02-39



18-02-39\_01



18-02-40



18-02-43



18-02-44



18-02-46



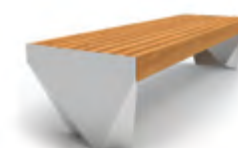
18-02-47



18-02-51



18-02-52



18-02-53



18-02-54



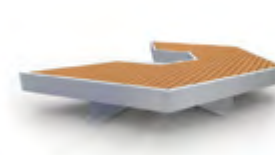
18-02-55



18-02-56



18-02-57



18-02-58



18-02-59



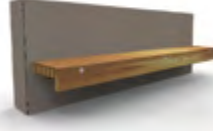
18-02-60



18-02-60\_01



18-02-62



18-02-63



18-02-64



18-02-65



18-02-66



18-02-67





18-02-67\_01

18-02-68

18-02-70

18-02-71

18-02-72

18-02-73

18-02-74



18-02-75

18-02-76

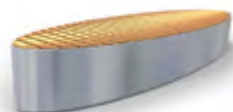
18-02-77

18-02-78

18-02-79

18-02-80

18-02-81



18-02-82

18-02-83

18-02-83\_01

18-02-83\_02

18-02-83\_03

18-02-84

18-02-85



18-02-86

19-02-02

19-02-03

19-02-04

19-02-04\_01

19-02-07

19-02-07\_01



19-02-09

19-02-10

19-02-10\_01

19-02-13

19-02-16

19-02-17

19-02-18



19-02-19

19-02-20

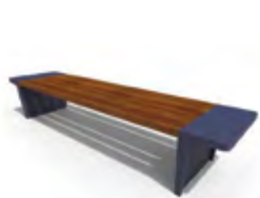
19-02-21

19-02-22

19-02-24

19-02-25

19-02-26



19-02-28



19-02-29



19-02-30



19-02-31



19-02-34



19-02-35



19-02-36



19-02-37



19-02-38



19-02-39



19-02-40



19-02-41



19-02-42



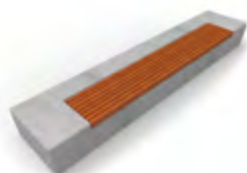
19-02-43



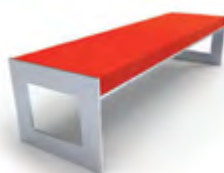
19-02-44



19-02-45



19-02-46



19-02-47



19-02-48



19-02-49



19-02-50



19-02-51



19-02-52



19-02-52\_02



19-02-53



19-02-57



19-02-58



19-02-59



19-02-59\_01



19-02-59\_02



19-02-60



19-02-61



19-02-62



19-02-63



19-02-64



19-02-66



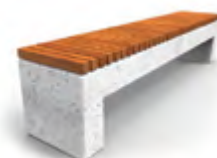
19-02-67



19-02-68



19-02-68\_01



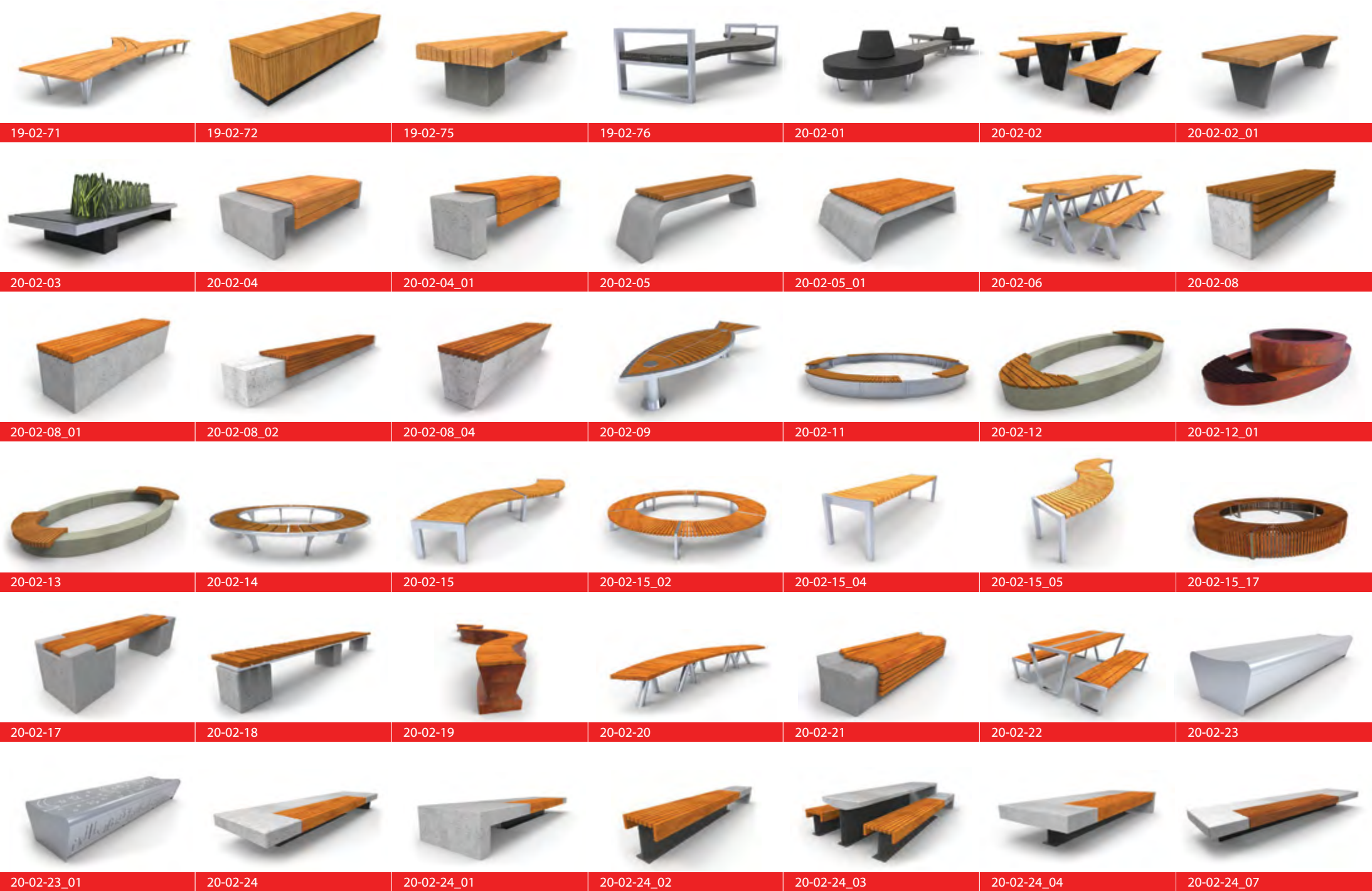
19-02-68\_02



19-02-69



19-02-70



19-02-71 19-02-72 19-02-75 19-02-76 20-02-01 20-02-02 20-02-02\_01



20-02-03 20-02-04 20-02-04\_01 20-02-05 20-02-05\_01 20-02-06 20-02-08



20-02-08\_01 20-02-08\_02 20-02-08\_04 20-02-09 20-02-11 20-02-12 20-02-12\_01



20-02-13 20-02-14 20-02-15 20-02-15\_02 20-02-15\_04 20-02-15\_05 20-02-15\_17



20-02-17 20-02-18 20-02-19 20-02-20 20-02-21 20-02-22 20-02-23



20-02-23\_01 20-02-24 20-02-24\_01 20-02-24\_02 20-02-24\_03 20-02-24\_04 20-02-24\_07



20-02-25    20-02-26    20-02-27    20-02-28    20-02-28\_01    20-02-28\_02    20-02-29

20-02-30    20-02-31    20-02-32    20-02-33    20-02-35    20-02-36    20-02-37

20-02-37\_01    20-02-38    20-02-38\_01    20-02-39    20-02-40    20-02-41    20-02-41\_01

20-02-42    20-02-43    20-02-44    20-02-45    20-02-46    20-02-46\_01    20-02-47

20-02-47\_01    20-02-47\_02    20-02-47\_03    20-02-48    20-02-49    20-04-21\_01    20-04-22

21-02-01    21-02-02    21-02-03    21-02-04    21-02-05    21-02-06    21-02-08



21-02-09



21-02-09\_01



21-02-10



21-02-11



21-02-12



21-02-12\_01



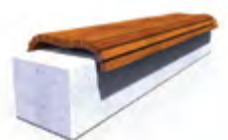
21-02-13



21-02-14



21-02-14\_01



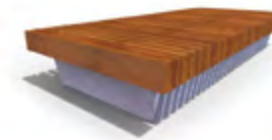
21-02-15



21-02-15



21-02-16



21-02-17



21-02-18



21-02-19



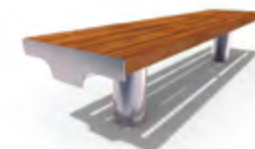
21-02-20



21-02-21



20-02-21\_01



21-02-22



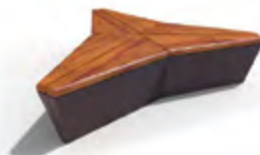
21-02-23



21-02-24



21-02-25



21-02-25\_01



21-02-26



21-02-27



21-02-28\_01



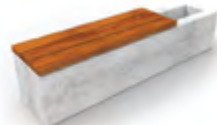
21-02-29



21-02-30



21-02-31



21-02-32



21-04-43



21-04-43\_01



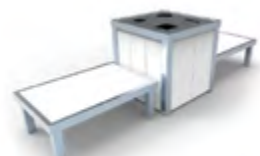
21-04-43\_03



22-02-01



22-02-02



22-02-02\_02



22-02-03



22-02-04



22-02-04\_01



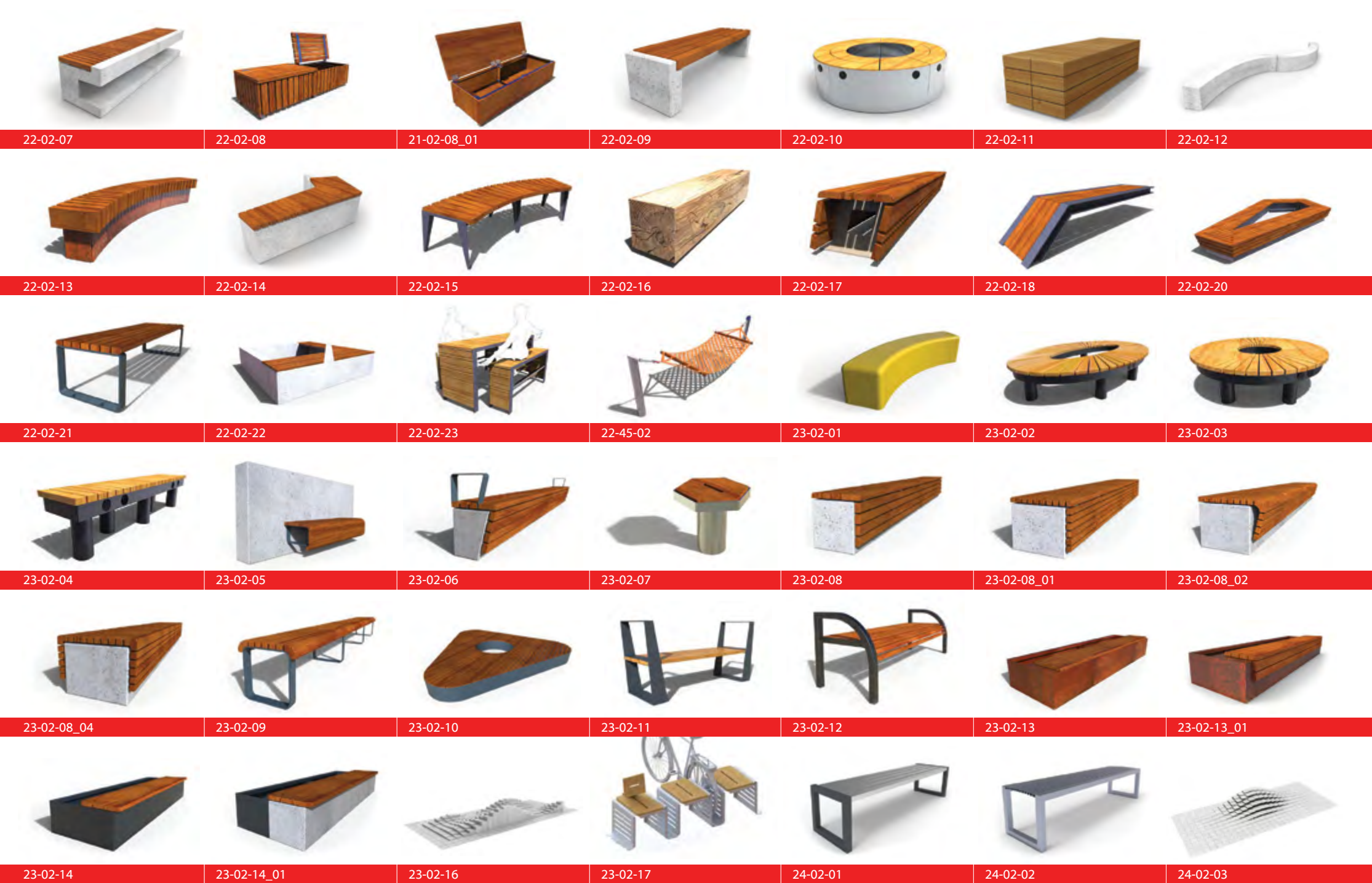
22-02-04\_02



22-02-05



22-02-06



22-02-07

22-02-08

21-02-08\_01

22-02-09

22-02-10

22-02-11

22-02-12

22-02-13

22-02-14

22-02-15

22-02-16

22-02-17

22-02-18

22-02-20

22-02-21

22-02-22

22-02-23

22-45-02

23-02-01

23-02-02

23-02-03

23-02-04

23-02-05

23-02-06

23-02-07

23-02-08

23-02-08\_01

23-02-08\_02

23-02-08\_04

23-02-09

23-02-10

23-02-11

23-02-12

23-02-13

23-02-13\_01

23-02-14

23-02-14\_01

23-02-16

23-02-17

24-02-01

24-02-02

24-02-03



24-02-04



24-02-05



24-02-06



24-02-07



24-02-07\_01



24-02-10



24-02-09



24-02-11



24-02-12



24-02-13



24-02-14



24-02-15



24-02-16



24-02-16\_01



24-02-17



24-02-18



24-02-19



24-02-20



24-02-20\_01



24-02-20\_02



24-02-20\_03



24-02-21



24-02-22



24-45-01



24-45-02



24-45-05



25-02-01



25-02-02



25-02-03



25-02-05



25-02-06



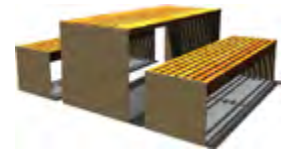
25-02-08



25-02-09



25-02-10\_01



25-02-11



25-02-12



25-02-13



25-02-14



25-02-16



25-02-17



26-02-01



26-02-02



26-02-03

26-02-04

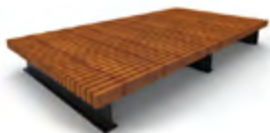
26-02-07

26-02-08

26-02-09

26-02-10

26-02-11



26-02-14

26-02-15

26-02-16





ŁAWY  
BENCHES



**PUCZYŃSKI**  
MAŁA ARCHITEKTURA  
STREET FURNITURE